

**SUTTNER**  
A M E R I C A C O M P A N Y

# ST-64 Upstream Chemical Injector

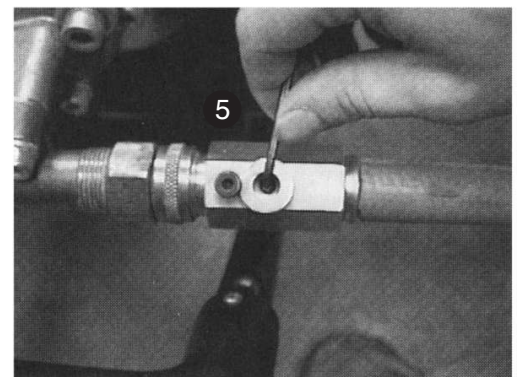
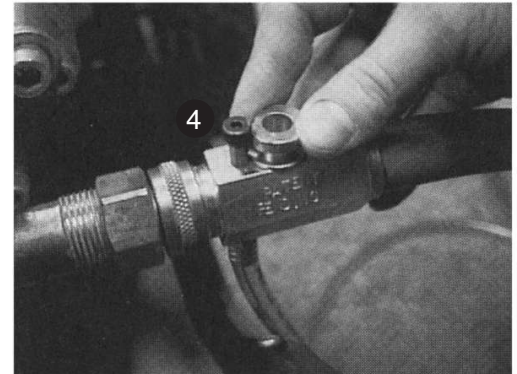
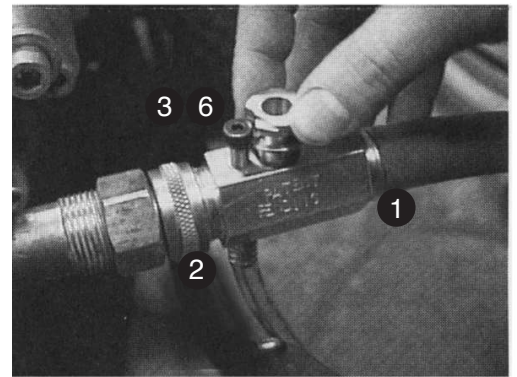
---

## Manual



## **INSTALLATION AND OPERATION:**

- ① Connect the water supply hose to the female of the injector.
- ② Connect the male threads of the injector to the garden swivel fitting on the pressure washer.
- ③ With the plunger up in the “off” position, turn on water supply and operate the pressure washer according to its operations manual.
- ④ Turn the plunger down to line the notch up with the shoulder bolt.
- ⑤ With the pressure washer operating, the trigger gun open, and the chemical line submerged, use an 1/8” hex wrench to adjust the screw down until chemical is being siphoned. **Caution: For proper adjustment see bottom picture: Screw depth determines amount of restriction that causes soap draw – over adjustment causes cavitation. Keep siphon hose submerged to prevent air intake.**
- ⑥ When not using chemical, turn the plunger up to the “off” position. If desired, turn the plunger to lock off. NOTE: Usually after the initial setting, the injector will not need additional adjustment; however, different elevations or inlet water pressures may require a different setting. Simply repeat step #5 as needed, adjusting the screw down.



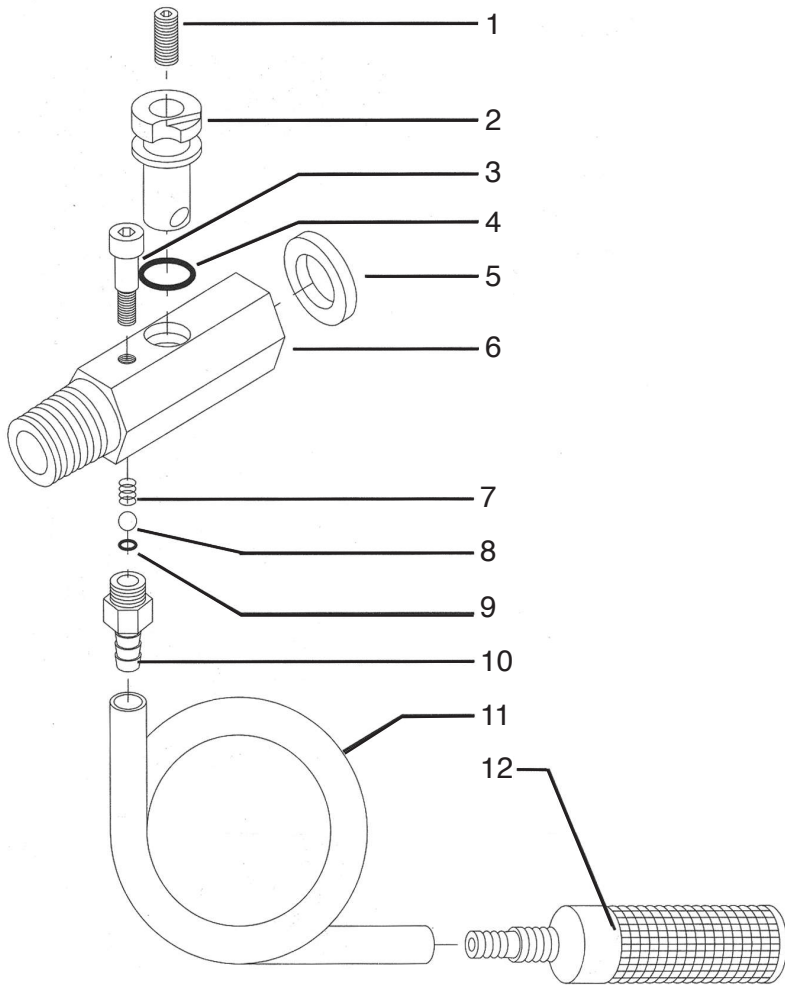
### **WARNINGS:**

1. Chemicals are injected before the pump. Ensure chemicals are harmless to the pressure washer pump.
2. Read all instructions and operation manuals.
3. Do not exceed maximum ratings.
4. Wear protective goggles and other recommended clothing.

### **CAUTIONS:**

1. Protect from freezing - Use and store injector in areas above 32° to prevent damage.
2. Do not use injector with hot water above 160°F to prevent damage.
3. Use clean water to prevent damage or premature wear to injectors components.
4. Always flush injectors after use.

# ST-64 (#999000019, #999000021, #999000022, #999000023)



Item #	Part #	Description
1	900000035	Adjustment Screw
2	900000034 900000042	Plunger, 1.5-4.0 GPM Plunger, 4.0-7.0 GPM
3	900000036	Shoulder Bolt, 1/4" x 3/8"
4	050000700	O-ring
5	900000040	Washer, Garden Hose
6	900000033 900000043	Body, 3/4" GHT Injector Body, 1/2" NPT Injector
*7	060000120	Spring
*8	060000110	Stainless Steel Ball
*9	050000070	O-ring
*10	010000200	Hose Barb
11	900000041	Hose, Clear Vinyl 1/4" x 4'
12	200031600	Strainer, Chemical
*	200060720	Repair kit "F"
Not Included	900000037	Adjusting Wrench

Symptom	Possible Cause	Action
No chemical being siphoned	-plunger is not in "on" position -chemical strainer is plugged -adjusting screw not properly set -inlet water pressure too high	-ensure the injector plunger is on -inspect and clean strainer -follow step #5 of installation and operation instructions -reduce inlet water pressure to 60 PSI
Water pump cavitation	-adjusting screw set down too far, causing excess restriction -chemical hose not submerged, causing air intake	-adjust the set screw (#1) up until cavitation stops -ensure siphon hose is submerged
Water leaks around plunger	-o-ring seal is worn -inlet water pressure is too high	-replace o-ring (#4) -do not exceed 60 PSI
Water leaks out chemical hose when plungers is in "off" position	-debris in valve -check valve is worn	-remove hose barb (#9) and inspect for debris -replace bad parts, or install repair kit "F" (#200060720)
Water leaks out screw threads	-thread tape worn from adjusting	-Re-apply thread tape