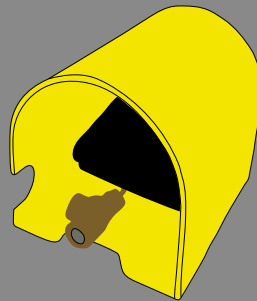
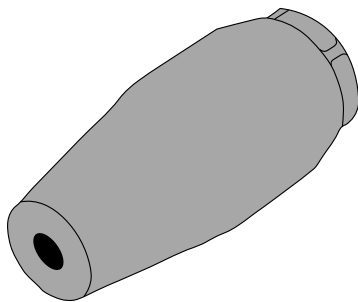
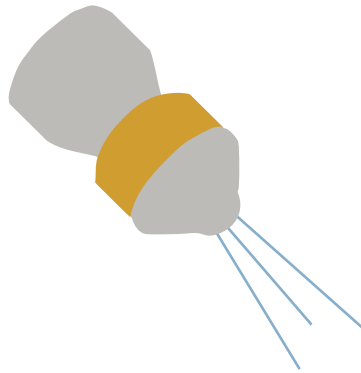
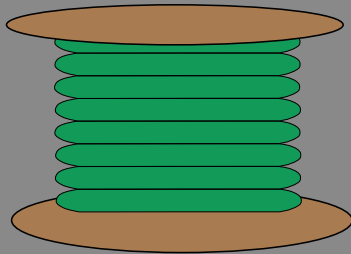
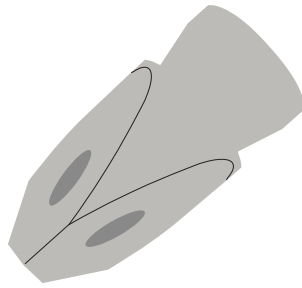


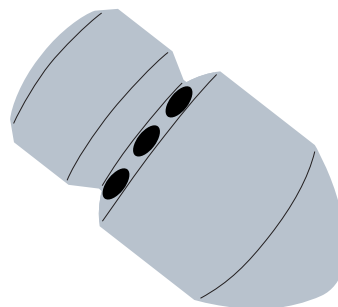
SUTTNER

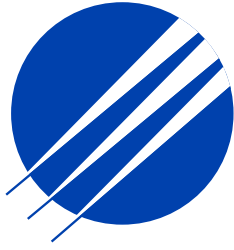
A M E R I C A C O M P A N Y

PRESSURE WASHER COMPONENTS & ACCESSORIES



Sewer & Drain
Cleaning
Catalog
2023-2024





SUTTNER

A M E R I C A C O M P A N Y

PRESSURE WASHER COMPONENTS & ACCESSORIES

With almost **60** years of experience, Suttner America Company is one of the worldwide leading manufacturers of high quality products for the cleaning industry.

Address:

14864 West Ridge Ln.
Dubuque, IA 52003

Fax:

(563) 556.3038
(800) 821.0660

Phone:

(563) 556.3212
(800) 831.0660

Email:

sales@suttner.com

Web:

www.suttner.com

GERMAN ENGINEERED TECHNOLOGY

Table of Contents

ABOUT US.....Page 3

SEWER HOSES.....Pages 4 through 6

SEWER NOZZLES.....Pages 7 through 17

FOOT ACTUATED VALVES.....Page 18

QR CODES.....Page 19

For Nearly

60 Years: The SUTTNER brand is recognized for many of the modern innovations in the high pressure cleaning applications today.

- 375 employees world wide.
- 430,000 square foot factory space worldwide.
- Suttner supplies components to more than 75 countries.
- In-house production of 95% of **ALL** products sold.

Training: We are committed to training, we believe the more knowledge the customer has, the easier the selling process.

Innovation: Suttner strives to develop 2 products each month on average.

Reliability: We strive to fill orders in a timely manner.

Integrity: Is a concept of consistency of actions, values, methods, measures, principles, expectations and outcomes.

Consistency: Our integrity guides us to supply our customers with the parts and accessories in a manner that they request.

Quality: Product branded with the SUTTNER name is designed and manufactured with quality products that features comfortable and easy function use that customers have come to expect for nearly **60 years.**

Discipline: Our management team has the business acumen to stay true to business strategies that partner with like-minded customers.

Loyalty: A shared business loyalty model combining quality of product and service leads to mutually satisfying and profitable relationships.

Partnership: Development of successful, long term, strategic relationships based on achieving best practice and sustainable competitive advantages.

Knowledge: Our North American staff average 18 years of industry experience.

Location: Central USA warehouse for quick shipping direct to all locations.

Our management team is driven by a true commitment to customer's needs. The Suttner team has extensive experience and provides the technical support needed. We specialize in personal service, spending time with customers over the phone or in person to diligently understand customer's needs and markets.



Visit our YouTube Channel



1/8" 4800 PSI BLACK SMOOTH HOSE



ORDER #	PRESSURE	TEMP.	I.D.	O.D.	FITTINGS	LENGTH	WEIGHT	BOX QTY
894800025	4800 PSI	160° F	.12"	.27"	1/8" MPT x 1/8" MPT	25 ft	2.5 lb	12
894800050	4800 PSI	160° F	.12"	.27"	1/8" MPT x 1/8" MPT	50 ft	4.3 lb	6
894800100	4800 PSI	160° F	.12"	.27"	1/8" MPT x 1/8" MPT	100 ft	7.75 lb	3

- Kevlar braid reinforced
- Seamless nylon inner tube
- 1" bend radius (2.54 cm)
- Black abrasion resistant polyurethane smooth cover
- Maximum flow rate up to 1.5 GPM
- 2.5:1 burst to operating pressure
- Lightweight and highly flexible



REPAIR YOUR OWN HOSE (fittings & ferrules)

Note: each fitting requires a crimp ferrule

ORDER #	DESCRIPTION	SIZE	BOX QTY
899480008	Zinc Crimp Ferrule	6.5 mm - OD	25
898480008	Zinc Fitting	1/8" MPT x 1/8" Barb	25

3/16" 4800 PSI BLACK SMOOTH HOSE



ORDER #	PRESSURE	TEMP.	I.D.	O.D.	FITTINGS	LENGTH	WEIGHT	BOX QTY
894803050	4800 PSI	160° F	.19"	.39"	1/8" MPT x 1/8" MPT	50 ft	5.37 lb	6
894803100	4800 PSI	160° F	.19"	.39"	1/8" MPT x 1/8" MPT	100 ft	9.75 lb	3

- Polyester braid reinforced
- Seamless nylon inner tube
- Male NPT zinc plated steel fitting
- Black abrasion resistant polyurethane smooth cover
- Maximum flow rate up to 2.5 GPM
- 2.5:1 burst to operating pressure
- Lightweight and highly flexible
- Ideal for 2"-4" diameter lines
- 1.18" bend radius (3.00 cm)



REPAIR YOUR OWN HOSE (fittings & ferrules)

Note: each fitting requires a crimp ferrule

ORDER #	DESCRIPTION	SIZE	BOX QTY
899480016	Zinc Crimp Ferrule	10.5 mm - OD	25
898480016	Zinc Fitting	1/8" MPT x 3/16" Barb	25

WIRE BRAID RUBBER SMOOTH SEWER HOSE

ORDER #	PRESSURE	TEMP.	I.D.	O.D.	FITTINGS	BEND RADIUS	LENGTH	WEIGHT
084290050	2900 PSI	140° F	1/8"	.41"	1/8" MPT x 1/4" MPT	1.5"	50 ft	4.3 lb
084290100	2900 PSI	140° F	1/8"	.41"	1/8" MPT x 1/4" MPT	1.5"	100 ft	8.5 lb
084350054	4350 PSI	212° F	1/4"	.44"	1/4" MPT x 1/4" MPT	2.95"	50 ft	4.3 lb
084350104	4350 PSI	212° F	1/4"	.44"	1/4" MPT x 1/4" MPT	2.95"	100 ft	8.5 lb
084350154	4350 PSI	212° F	1/4"	.44"	1/4" MPT x 1/4" MPT	2.95"	150 ft	13 lb
084350204	4350 PSI	212° F	1/4"	.44"	1/4" MPT x 1/4" MPT	2.95"	200 ft	17.25 lb
084400025	4400 PSI	160° F	1/4"	.47"	1/8" MPT x 1/8" MPT	1.25"	25 ft	1.8 lb
084400026	4400 PSI	160° F	1/4"	.47"	1/8" x 1/8" 25' w/4.5 nozzle & M22 nipple	1.25"	25 ft	1.8 lb



#084400026 sewer hose comes with 4.5 sewer nozzle & M22 nipple

- Durable wire braid rubber construction, flexible and lightweight for cornering around line elbows

1/4" TEXTILE BRAID THERMOPLASTIC SMOOTH HOSE

ORDER #	FITTINGS	LENGTH	WEIGHT	BOX QTY
894400050	1/4" MPT x 1/4" MPT Swivel	50 ft	6.75 lb	10
894400075	1/4" MPT x 1/4" MPT Swivel	75 ft	9.25 lb	5
894400100	1/4" MPT x 1/4" MPT Swivel	100 ft	12.5 lb	6
894400150	1/4" MPT x 1/4" MPT Swivel	150 ft	18.25 lb	4
894400200	1/4" MPT x 1/4" MPT Swivel	200 ft	24 lb	3
894400300	1/4" MPT x 1/4" MPT Swivel	300 ft	35.5 lb	2

PRESSURE	TEMP.	I.D.
4400 PSI	160° F	.25"



- Polyester braid reinforced
- Seamless thermoplastic inner tube
- Male NPT zinc plated steel fitting
- Black abrasion resistant thermoplastic smooth cover
- Maximum flow rate up to 4.0 GPM
- 2.5:1 burst to operating pressure
- Lightweight and highly flexible
- Ideal for 2"-4" diameter lines
- 1.57 bend radius (3.99 cm)

REPAIR YOUR OWN HOSE (fittings & ferrules)

Note: each fitting requires a crimp ferrule

ORDER #	DESCRIPTION	SIZE	BOX QTY
899440014	Zinc Crimp Ferrule	13.5 mm - OD	25
898440014	Zinc Fitting	1/4" MPT x Barb	25
898440015	Zinc Fitting	1/4" MPT x Barb swivel	25





3/8" 4000 PSI BLACK SMOOTH HOSE

ORDER #	FITTINGS	LENGTH	WEIGHT	BOX QTY
894000050	3/8" MPT x 3/8" MPT Swivel	50 ft	10.24 lb	6
894000100	3/8" MPT x 3/8" MPT Swivel	100 ft	19 lb	3
894000150	3/8" MPT x 3/8" MPT Swivel	150 ft	27.75 lb	2
894000200	3/8" MPT x 3/8" MPT Swivel	200 ft	46.5 lb	1
894000250	3/8" MPT x 3/8" MPT Swivel	250 ft	55.25 lb	1
894000300	3/8" MPT x 3/8" MPT Swivel	300 ft	64 lb	1

- Reinforced with (1) layer of steel wire braid
- Seamless nylon inner tube
- Highly flexible
- Black abrasion resistant polyurethane smooth cover
- Maximum flow rate up to 9.0 GPM
- 2.51 burst to operating pressure
- Ideal for 4"-8" diameter lines
- 3.94" bend radius (10.1 cm)



REPAIR YOUR OWN HOSE (fittings & ferrules)

Note: each fitting requires a crimp ferrule

ORDER #	DESCRIPTION	SIZE	BOX QTY
899400045	Zinc Crimp Ferrule	19 mm - OD	25
898400038	Zinc Fitting	3/8" MPT x Barb	25
898400039	Zinc Fitting	3/8" MPT x Barb swivel	25



1/2" 4000 PSI GREEN SMOOTH HOSE

ORDER #	FITTINGS	LENGTH	WEIGHT
894012050	1/2" MPT X 1/2" MPT Swivel	50 ft	23.5 lb
894012100	1/2" MPT X 1/2" MPT Swivel	100 ft	28.5 lb
894012200	1/2" MPT X 1/2" MPT Swivel	200 ft	64.5 lb
894012300	1/2" MPT X 1/2" MPT Swivel	300 ft	91 lb
894012500	1/2" MPT X 1/2" MPT Swivel	500 ft	143 lb

PRESSURE	TEMP.	I.D.
4000 PSI	160° F	.50"

- Reinforced with (2) layers of steel wire braid
- Seamless nylon inner tube
- Green abrasion resistant polyurethane smooth cover
- Maximum flow rate up to 15 GPM
- Ideal for 6"-12" diameter lines
- 3.94" bend radius (10.1 cm)

REPAIR YOUR OWN HOSE (fittings & ferrules)

Note: each fitting requires a crimp ferrule

ORDER #	DESCRIPTION	SIZE	BOX QTY
899400012	Zinc Crimp Ferrule	23 mm - OD	15
898400050	Zinc Fitting	1/2" MPT x Barb	15
898400051	Zinc Fitting	1/2" MPT x Barb swivel	15

Foot Actuated Valves



FOOT ACTUATED VALVE (3000 psi)

Foot controlled valves allow both hands to be free to control the sewer hose pulling hose back and forth to flush pipes

ORDER #	PRESSURE	TEMP.	INLET	OUTLET	FLOW RATE	WEIGHT
999000012	3000 PSI	320° F	3/8" FPT	1/4" FPT	8 GPM	7 lb

Complete Valve Repair Kit: #200851484

- Inlet and outlet are positioned to help keep hose out of the way
- Heavy gauge steel construction for durability and stability
- Pedal and valve are in protective housing



Valve housing



FOOT ACTUATED VALVE (5000 psi)

Foot controlled valves allow both hands to be free to control the sewer hose pulling hose back and forth to flush pipes

ORDER #	PRESSURE	TEMP.	INLET	OUTLET	FLOW RATE	WEIGHT
999002305	5000 PSI	300° F	3/8" FPT	1/4" FPT	12 GPM	15 lb
999002700	5000 PSI	300° F	3/8" FPT	1/4" FPT	12 GPM	15 lb

Repair Kits: #202300490
#202700490

- Heavy gauge steel construction for durability and stability
- Uses the ST-2305 or ST-2700 spray guns as a control valve
- Pedal and valve are in protective housing
- Inlet and outlet are positioned to help keep hose out of the way



ST-550 FOOT ACTUATED VALVE (7300 psi)

Foot controlled valves allow both hands to be free to control the sewer hose pulling hose back and forth to flush pipes

ORDER #	PRESSURE	TEMP.	INLET	OUTLET	FLOW RATE	WEIGHT
200550500	7300 PSI	300° F	1/4" FPT	1/4" FPT	10.5 GPM	9 lb

Repair Kit: #203600490

- Inlet and outlet are positioned to help keep hose out of the way
- Stainless steel construction
- Pedal and valve are in protective housing

NON-ROTATING MINI SEWER NOZZLE

ORDER #	PRESSURE	O.D.	NOZZLE SIZE	REAR JETS	SIDE JETS	INLET
120000380	7252 PSI	.39"	030	3	—	1/16" F
120001380	7252 PSI	.39"	065	3	—	1/16" F
120373373	7252 PSI	.39"	065	3	3	1/16" F



#120000380



#120373373

- (3) rear jets for maximum thrust
- (3) (90°) side jet option for powerful wall coverage
- Ideal for 1/2" - 1" diameter lines
- Stainless steel

NON-ROTATING "COMPRESSOR" SEWER NOZZLE

ORDER #	PRESSURE	O.D.	FLOW RATE	NOZZLE SIZE	FRONT JETS	REAR JETS	INLET
120155375	7252 PSI	.59"	4.5 GPM	035	1	3	1/8" F
10120045004	7252 PSI	.59"	4.5 GPM	045	—	4	1/8" F
10120045103	7252 PSI	.59"	4.5 GPM	045	1	3	1/8" F
10120055004	7252 PSI	.59"	4.5 GPM	055	—	4	1/8" F
10120055103	7252 PSI	.59"	4.5 GPM	055	1	3	1/8" F
10120080004	7252 PSI	.59"	4.5 GPM	080	—	4	1/8" F
10120080103	7252 PSI	.59"	4.5 GPM	080	1	3	1/8" F



- Compact design is ideal for maneuvering through tight elbows
- Front port blasts through roots, solid clogs, scale and ice
- Ideal for 1" - 3" diameter lines
- Hardened stainless steel

NON-ROTATING "PREDATOR" SEWER NOZZLE

ORDER #	PRESSURE	O.D.	FLOW RATE	NOZZLE SIZE	FRONT JETS	REAR JETS	INLET
120163390	7252 PSI	.86"	6.6 GPM	045	1	3	1/4" F



- Cone shape design is ideal for maneuvering through tight bends and traps
- Front jets for blasting through clogs
- (3) rear jets for a maximum thrust and cleaning impact
- Hardened stainless steel
- Ideal for 2" - 4" diameter lines

Sewer Nozzles



NON-ROTATING "ROOT RAM" SEWER NOZZLE

ORDER #	PRESSURE	O.D.	FLOW RATE	NOZZLE SIZE	FRONT JETS	REAR JETS	INLET
120155672	7252 PSI	.86"	7.9 GPM	055	1	6	1/4" F

- (3) rear (30°) jets and (3) rear (45°) for better drive and cleaning coverage
- Ideal for 2" - 4" lines
- Hardened stainless steel



NON-ROTATING "GREASE BALL" SEWER NOZZLE

ORDER #	PRESSURE	O.D.	NOZZLE SIZE	REAR JETS	INLET
120000860	7252 PSI	1"	080	8	1/4" F

- Designed for cleaning side wall debris and works well on roots
- Hardened stainless steel
- Ideal for 2" - 4" diameter lines
- Jets are recessed for damage protection



NON-ROTATING "HYDRO MOLE" SEWER NOZZLE

ORDER #	PRESSURE	O.D.	NOZZLE SIZE	FRONT JETS	REAR JETS	INLET
120460385	7250 PSI	.86"	070	4	3	1/4" F

- 4 strong, concentrated forward jets for breaking through most any solid clog, including ice
- Ideal for 2" - 4" lines
- Nozzle jets are recessed for protection against physical impact

#120163391



#120000675

NON-ROTATING "NEGOTIATOR" SEWER NOZZLE

ORDER #	PRESSURE	O.D.	FLOW RATE	NOZZLE SIZE	FRONT JETS	REAR JETS	INLET
120163391	7252 PSI	.86"	7.9 GPM	050	1	3	1/4" F
120000675	7252 PSI	.86"	7.9 GPM	060	—	6	1/4" F

- Compact design, ideal for tight elbows
- Hardened stainless steel
- Ideal for 2" - 4" diameter lines
- Available with 3 or 6 rear jets
- Also available with or without front jets

NON-ROTATING "BALL TYPE" SEWER NOZZLE

ORDER #	PRESSURE	O.D.	NOZZLE SIZE	FRONT JETS	REAR JETS	INLET
122370000	4200 PSI	.59"	035	—	3	1/8" F
122365000	4200 PSI	.59"	040	—	3	1/8" F
122375000	4200 PSI	.59"	045	—	3	1/8" F
122390000	4200 PSI	.59"	055	—	3	1/8" F
122300000	4200 PSI	.59"	060	—	3	1/8" F
122320500	4200 PSI	.59"	090	—	3	1/8" F
122375175	4200 PSI	.59"	050	1	3	1/8" F
122370170	4200 PSI	.59"	055	1	3	1/8" F
122385185	4200 PSI	.59"	060	1	3	1/8" F
122390190	4200 PSI	.59"	065	1	3	1/8" F
122300100	4200 PSI	.59"	075	1	3	1/8" F
122320120	4200 PSI	.59"	100	1	3	1/8" F
900204012	4200 PSI	.59"	120	1	3	1/8" F
121370000	4200 PSI	.75"	035	—	3	1/4" F
121395000	4200 PSI	.75"	040	—	3	1/4" F
121380000	4200 PSI	.75"	045	—	3	1/4" F
121390000	4200 PSI	.75"	050	—	3	1/4" F
121480000	4200 PSI	.75"	055	—	4	1/4" F
121300000	4200 PSI	.75"	060	—	3	1/4" F
121312000	4200 PSI	.75"	090	—	3	1/4" F
121880000	4200 PSI	.75"	120	—	8	1/4" F
121360170	4200 PSI	.75"	040	1	3	1/4" F
121370170	4200 PSI	.75"	045	1	3	1/4" F
121375175	4200 PSI	.75"	055	1	3	1/4" F
121470170	4200 PSI	.75"	060	1	4	1/4" F
121390191	4200 PSI	.75"	065	1	3	1/4" F
121480180	4200 PSI	.75"	075	1	4	1/4" F
121395195	4200 PSI	.75"	080	1	3	1/4" F
121310000	4200 PSI	.75"	090	1	3	1/4" F
121320010	4200 PSI	.75"	100	1	3	1/4" F
121500100	4200 PSI	.75"	100	1	5	1/4" F
121320000	4200 PSI	.75"	120	1	3	1/4" F
123065184	4200 PSI	.920"	070	—	4	3/8" F
123065188	4200 PSI	.920"	040	1	3	3/8" F
123065187	4200 PSI	.920"	055	1	3	3/8" F
123065189	4200 PSI	.920"	085	1	4	3/8" F
123065186	4200 PSI	.920"	120	1	4	3/8" F
123065185	4200 PSI	.920"	140	1	4	3/8" F
123065182	4200 PSI	.920"	150	1	4	3/8" F
123065181	4200 PSI	.920"	200	1	4	3/8" F



1/8" ideal for
1" - 3" lines



1/4" ideal for
2" - 4" lines



3/8" ideal for
4" - 8" lines

- Nozzles with forward ports blast through and break up clogs
- Rear ports thrust nozzle forward and flush debris
- Great cornering ability
- Stainless steel
- Size stamped nozzle

Sewer Nozzles

NON-ROTATING "BULLET" SEWER NOZZLE



1/4" ideal for
2" - 4" lines



3/8" ideal for
4" - 8" lines



Inserts
included

ORDER #	PRESSURE	O.D.	NOZZLE SIZE	FRONT JETS	REAR JETS	INLET
649030216040	7252 PSI	.98"	040	None	6	1/4" F
649030216045	7252 PSI	.98"	045	1	6	1/4" F
649030216055	7252 PSI	.98"	055	1	6	1/4" F
649030216060	7252 PSI	.98"	060	1 or None	6	1/4" F
649030216070	7252 PSI	.98"	070	1	6	1/4" F
649030216080	7252 PSI	.98"	080	1 or None	6	1/4" F
649030216081	7252 PSI	.98"	080	1	6	1/4" F
649030216085	7252 PSI	.98"	085	1	6	1/4" F
649030216100	7252 PSI	.98"	100	1	6	1/4" F
649030216120	7252 PSI	.98"	120	1 or None	6	1/4" F
649030216121	7252 PSI	.98"	120	0	6	1/4" F
649030216150	7252 PSI	.98"	150	1	6	1/4" F
649030216161	7252 PSI	.98"	160	0	6	1/4" F
649030216180	7252 PSI	.98"	180	1	6	1/4" F
649030216200	7252 PSI	.98"	200	1 or None	6	1/4" F
649030216250	7252 PSI	.98"	250	1	6	1/4" F
649030314045	7252 PSI	1.18"	045	1	4	3/8" F
649030314050	7252 PSI	1.18"	050	1	4	3/8" F
649030314055	7252 PSI	1.18"	055	1	4	3/8" F
649030314060	7252 PSI	1.18"	060	1	4	3/8" F
649030314061	7252 PSI	1.18"	060	0	4	3/8" F
649030314065	7252 PSI	1.18"	065	1	4	3/8" F
649030314080	7252 PSI	1.18"	080	1	4	3/8" F
649030314081	7252 PSI	1.18"	080	0	4	3/8" F
649030314100	7252 PSI	1.18"	100	1	4	3/8" F
649030314101	7252 PSI	1.18"	100	0	4	3/8" F
649030314120	7252 PSI	1.18"	120	1 or None	4	3/8" F
649030314150	7252 PSI	1.18"	150	1	4	3/8" F
649030314200	7252 PSI	1.18"	200	1	4	3/8" F
649030316050	7252 PSI	.98"	050	1	6	3/8" F
649030316060	7252 PSI	.98"	060	1 or None	6	3/8" F
649030316061	7252 PSI	.98"	060	0	6	3/8" F
649030316065	7252 PSI	.98"	065	1	6	3/8" F
649030316080	7252 PSI	.98"	080	1 or None	6	3/8" F
649030316081	7252 PSI	.98"	080	0	6	3/8" F
649030316100	7252 PSI	.98"	100	1	6	3/8" F
649030316120	7252 PSI	.98"	120	1 or None	6	3/8" F
649030316121	7252 PSI	.98"	120	0	6	3/8" F
649030316140	7252 PSI	.98"	140	1	6	3/8" F
649030316150	7252 PSI	.98"	150	1	6	3/8" F
649030316200	7252 PSI	.98"	200	1 or None	6	3/8" F
649030316250	7252 PSI	.98"	250	1	6	3/8" F

- Made of wear resistant stainless steel
- Available with or without front jets
- Sturdy wall thickness
- All ports are hardened stainless steel inserts, precisely drilled for efficiency
- Ideal for removing sludge and silt; and blasting through frozen clogs

NON-ROTATING "BULLET" SEWER NOZZLE

ORDER #	PRESSURE	O.D.	NOZZLE SIZE	FRONT JETS	REAR JETS	INLET
649030416041	7252 PSI	1.18"	040	1	6	1/2" F
649030416045	7252 PSI	1.18"	045	1	6	1/2" F
649030416060	7252 PSI	1.18"	060	1 or None	6	1/2" F
649040416075	7252 PSI	1.18"	075	1	6	1/2" F
649030416080	7252 PSI	1.18"	080	1 or None	6	1/2" F
649030416081	7252 PSI	1.18"	080	0	6	1/2" F
649030416100	7252 PSI	1.18"	100	1	6	1/2" F
649030416120	7252 PSI	1.18"	120	1 or None	6	1/2" F
649030416121	7252 PSI	1.18"	120	0	6	1/2" F
649030416140	7252 PSI	1.18"	140	1	6	1/2" F
649030416150	7252 PSI	1.18"	150	1	6	1/2" F
649030416151	7252 PSI	1.18"	150	0	6	1/2" F
649030416180	7252 PSI	1.18"	180	1	6	1/2" F
649030416200	7252 PSI	1.18"	200	1 or None	6	1/2" F
649030416201	7252 PSI	1.18"	200	0	6	1/2" F
649030415280	7252 PSI	1.18"	280	0	6	1/2" F
649030416280	7252 PSI	1.18"	280	1	6	1/2" F
649030416355	7252 PSI	1.18"	355	0	6	1/2" F
649030416615	7252 PSI	1.18"	615	1	6	1/2" F
652200040400	7252 PSI	2.76"	400	0	6	3/4" F
652200040401	7252 PSI	2.76"	400	1	6	3/4" F
652200040450	7252 PSI	2.76"	450	1	6	3/4" F
652200030470	7252 PSI	2.76"	470	1	6	3/4" F
652200040470	7252 PSI	2.76"	470	0	6	3/4" F
652200030615	7252 PSI	2.76"	615	1	6	3/4" F
652200060230	7252 PSI	2.95"	230	1	8	1" F
652200060650	7252 PSI	2.95"	650	1	8	1" F
652200050750	7252 PSI	2.95"	700	0	8	1" F
652200060750	7252 PSI	2.95"	750	1	8	1" F



1/2" ideal for 6"-12" lines



3/4" ideal for 12"-20" lines



1" ideal for 20"-28" lines



Inserts included

- Made of wear resistant stainless steel
- Available with or without front jets
- Sturdy wall thickness
- All ports are hardened stainless steel inserts, precisely drilled for efficiency
- Ideal for removing sludge and silt; and blasting through frozen clogs

Sewer Nozzles



- 1/4" ideal for 2" - 4" lines
- 3/8" ideal for 4" - 8" lines
- 1/2" ideal for 6" - 12" lines
- 3/4" ideal for 12" - 20" lines

WARHEAD RADIAL NOZZLES

ORDER #	PRESSURE	NOZZLE SIZE	FRONT JETS	SIDE JETS	REAR JETS	INLET
649110219065	7250 PSI	065	1	6	3	1/4" F
649110219080	7250 PSI	080	1	6	3	1/4" F
649110219100	7250 PSI	100	1	6	3	1/4" F
649110219120	7250 PSI	120	1	6	3	1/4" F
649110219150	7250 PSI	150	1	6	3	1/4" F
649110219200	7250 PSI	200	1	6	3	1/4" F
649110319065	7250 PSI	065	1	6	3	3/8" F
649110319080	7250 PSI	080	1	6	3	3/8" F
649110319100	7250 PSI	100	1	6	3	3/8" F
649110319120	7250 PSI	120	1	6	3	3/8" F
649110319150	7250 PSI	150	1	6	3	3/8" F
649110319200	7250 PSI	200	1	6	3	3/8" F
649110419080	7250 PSI	080	1	6	3	1/2" F
649110419100	7250 PSI	100	1	6	3	1/2" F
649110419120	7250 PSI	120	1	6	3	1/2" F
649110419150	7250 PSI	150	1	6	3	1/2" F
649110419200	7250 PSI	200	1	6	3	1/2" F
649110419250	7250 PSI	250	1	6	3	1/2" F
649110519450	7250 PSI	450	1	6	3	3/4" F

- Made of wear resistant hardened stainless steel
- All ports are hardened stainless steel for efficiency
- Improved sidewall cleaning
- Great for sanitary applications
- Ideal for removing hard grease and scale

WARHEAD NOZZLES



- 1/4" ideal for 2" - 4" lines
- 3/8" ideal for 4" - 8" lines

ORDER #	PRESSURE	NOZZLE SIZE	FRONT JETS	REAR JETS	INLET
649120216065	7250 PSI	065	1	6	1/4" F
649120216080	7250 PSI	080	1	6	1/4" F
649120216100	7250 PSI	100	1	6	1/4" F
649120216120	7250 PSI	120	1	6	1/4" F
649120216150	7250 PSI	150	1	6	1/4" F
649120216200	7250 PSI	200	1	6	1/4" F
649120316040	7250 PSI	040	1	6	3/8" F
649120316065	7250 PSI	065	1	6	3/8" F
649120316080	7250 PSI	080	1	6	3/8" F
649120316100	7250 PSI	100	1	6	3/8" F
649120316120	7250 PSI	120	1	6	3/8" F
649120316150	7250 PSI	150	1	6	3/8" F
649120316200	7250 PSI	200	1	6	3/8" F

- Made of wear resistant hardened stainless steel
- All ports are hardened stainless steel for efficiency
- Great for sanitary applications
- Ideal for removing hard grease and scale

WARHEAD NOZZLES

ORDER #	PRESSURE	NOZZLE SIZE	FRONT JETS	REAR JETS	INLET
649120416080	7250 PSI	080	1	6	1/2" F
649120416100	7250 PSI	100	1	6	1/2" F
649120416120	7250 PSI	120	1	6	1/2" F
649120416150	7250 PSI	150	1	6	1/2" F
649120416200	7250 PSI	200	1	6	1/2" F
649120416250	7250 PSI	250	1	6	1/2" F
649120618100	7250 PSI	100	1	8	1" F



- 1/2" ideal for 6" - 12" lines
- 1" ideal for 20" - 28" lines

- Made of wear resistant hardened stainless steel
- All ports are hardened stainless steel for efficiency
- Great for sanitary applications
- Ideal for removing hard grease and scale

VIBRATING ROTATING NOZZLE

ORDER #	PRESSURE	O.D.	REAR JETS	SIDE JETS	INLET
200049671xxx	3625 PSI	1.18"	4	3	1/4" F
200049676xxx	3625 PSI	1.18"	4	3	3/8" F
200049681xxx	3625 PSI	1.50"	5	3	1/2" F
200049686xxx	3625 PSI	1.50"	6	3	3/4" F



- Stainless steel and brass construction

ST-49 ROTATING SEWER NOZZLE

ORDER #	PRESSURE	O.D.	FLOW RATE	NOZZLE SIZE	REAR JETS	SIDE JETS	INLET
200049950	7252 PSI	.47"	6.6 GPM	050	2	2	1/8" FBSP
200049970	7252 PSI	.47"	9.2 GPM	070	2	2	1/8" FBSP
200049951	7252 PSI	.47"	6.6 GPM	050	2	2	1/8" FPT
200049971	7252 PSI	.47"	9.2 GPM	070	2	2	1/8" FPT



#200049950

- Hardened stainless steel
- Excellent interior cleaning nozzle
- Slower rotor speed for higher cleaning performance
- Ideal for cleaning heat exchange tubes



ST-49 ROTATING SEWER NOZZLE

ORDER #	PRESSURE	O.D.	NOZZLE SIZE	FRONT JETS	REAR JETS	SIDE JETS	INLET
200049825	4000 PSI	.74"	045	None	3	None	1/8" F
200049830	4000 PSI	.74"	050	None	3	None	1/8" F
200049650	4000 PSI	.74"	055	None	3	None	1/8" F
200049840	4000 PSI	.74"	060	None	3	None	1/8" F
200049845	4000 PSI	.74"	070	None	3	None	1/8" F
200049850	4000 PSI	.74"	080	None	3	None	1/8" F
200049794	4000 PSI	.74"	040	None	3	None	1/4" F
200049795	4000 PSI	.74"	045	None	3	None	1/4" F
200049800	4000 PSI	.74"	050	None	3	None	1/4" F
200049600	4000 PSI	.74"	055	None	3	None	1/4" F
200049810	4000 PSI	.74"	060	None	3	None	1/4" F
200049815	4000 PSI	.74"	070	None	3	None	1/4" F
200049610	4000 PSI	.74"	080	None	3	None	1/4" F
200049700	4000 PSI	.74"	055	None	None	2	1/4" F
200065161	4000 PSI	.74"	090	None	3	2	1/4" F
200065162	4000 PSI	.74"	120	3	3	2	1/4" F
200049860	4000 PSI	.94"	040	None	3	None	3/8" F
200049870	4000 PSI	.94"	045	None	3	None	3/8" F
200049880	4000 PSI	.94"	050	None	3	None	3/8" F
200049890	4000 PSI	.94"	060	None	3	None	3/8" F
200049885	4001 PSI	.94"	065	None	3	None	3/8" F
200049891	4000 PSI	.94"	080	None	3	None	3/8" F
200049892	4000 PSI	.94"	100	None	3	None	3/8" F
200049893	4000 PSI	.94"	120	None	3	None	3/8" F
200049894	4000 PSI	.94"	150	None	3	None	3/8" F
200049895	4000 PSI	.94"	200	None	4	None	3/8" F
200049896	4000 PSI	.94"	100	1	3	None	3/8" F
200049897	4000 PSI	.94"	120	1	3	None	3/8" F
200049898	4000 PSI	.94"	150	1	3	None	3/8" F
200049899	4000 PSI	.94"	180	1	3	None	3/8" F

- Brass and stainless construction
- Ideal for cleaning or flushing pipes
- Size stamped on nozzle
- 1/8" ideal for 1"-3" lines
- 1/4" ideal for 2"-4" lines
- 3/8" ideal for 4"-8" lines

NON-ROTATING "MILLING" SEWER NOZZLE

ORDER #	PRESSURE	O.D.	NOZZLE SIZE	FRONT JETS	REAR JETS	INLET
649010234040	5076 PSI	.95"	040	3	4	1/4" F
649010234045	5076 PSI	.95"	045	3	4	1/4" F
649010234050	5076 PSI	.95"	050	3	4	1/4" F
649010234055	5076 PSI	.95"	055	3	4	1/4" F
649010244060	5076 PSI	.95"	060	3 or 4	4	1/4" F
649010244061	5076 PSI	.95"	060	3	4	1/4" F
649010244070	5076 PSI	.95"	070	3 or 4	4	1/4" F
649010244080	5076 PSI	.95"	080	3 or 4	4	1/4" F
649010244081	5076 PSI	.95"	080	3	4	1/4" F
649010244085	5076 PSI	.95"	085	4	4	1/4" F
649010244100	5076 PSI	.95"	100	4	4	1/4" F
649010244101	5076 PSI	.95"	100	3	4	1/4" F
649010244120	5076 PSI	.95"	120	3 or 4	4	1/4" F
649010244150	5076 PSI	.95"	150	4	4	1/4" F
649010244200	5076 PSI	.95"	200	4	4	1/4" F
649010336045	5076 PSI	1.11"	045	3	6	3/8" F
649010336055	5076 PSI	1.11"	055	3	6	3/8" F
649010346070	5076 PSI	1.11"	070	4	6	3/8" F
649010346071	5076 PSI	1.11"	070	3	6	3/8" F
649010346080	5076 PSI	1.11"	080	4	6	3/8" F
649010346081	5076 PSI	1.11"	080	3	6	3/8" F
649010346085	5076 PSI	1.11"	085	3	6	3/8" F
649010346090	5076 PSI	1.11"	090	4	6	3/8" F
649010346100	5076 PSI	1.11"	100	4	6	3/8" F
649010346101	5076 PSI	1.11"	100	3	6	3/8" F
649010346120	5076 PSI	1.11"	120	3 or 4	6	3/8" F
649010346150	5076 PSI	1.11"	150	4	6	3/8" F
649010346200	5076 PSI	1.11"	200	3 or 4	6	3/8" F
649010346250	5076 PSI	1.11"	250	4	6	3/8" F
649010346270	5076 PSI	1.11"	270	4	6	3/8" F
649010446070	5076 PSI	1.23"	070	3	6	1/2" F
649010446075	5076 PSI	1.23"	075	4	6	1/2" F
649010446080	5076 PSI	1.23"	080	4	6	1/2" F
649010446081	5076 PSI	1.23"	080	3	6	1/2" F
649010446100	5076 PSI	1.23"	100	3 or 4	6	1/2" F
649010446120	5076 PSI	1.23"	120	3 or 4	6	1/2" F
649010446150	5076 PSI	1.23"	150	4	6	1/2" F
649010446180	5076 PSI	1.23"	180	4	6	1/2" F
649010446200	5076 PSI	1.23"	200	4	6	1/2" F
649010446201	5076 PSI	1.23"	200	3	6	1/2" F
649010446250	5076 PSI	1.23"	250	4	6	1/2" F
649010446310	5076 PSI	1.23"	310	4	6	1/2" F
649010446311	5076 PSI	1.23"	310	3	6	1/2" F
649010446495	5076 PSI	1.23"	495	4	6	1/2" F



Spike available for front port #040075090



1/4" ideal for 2" - 4" lines



3/8" ideal for 4" - 8" lines



1/2" ideal for 6" - 12" lines

- Sharp cutting edges and forward tearing jets tear through almost any clog
- Ports are hardened stainless steel insert type with precision port
- Works well for lines with roots
- Hardened stainless steel body

Sewer Nozzles



3/4" ideal for
12" - 20" lines



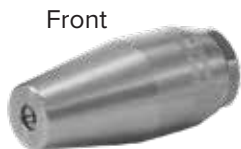
1" ideal for
20" - 28" lines

NON-ROTATING "MILLING" SEWER NOZZLE *continued*

ORDER #	PRESSURE	O.D.	NOZZLE SIZE	FRONT JETS	REAR JETS	INLET
652300040400	5076 PSI	1.50"	400	3	6	3/4" F
652300040401	5076 PSI	1.50"	400	4	6	3/4" F
652300040450	5076 PSI	1.50"	450	4	6	3/4" F
652300040580	5076 PSI	1.50"	580	4	6	3/4" F
652300040680	5076 PSI	1.50"	680	4	6	3/4" F
652300050750	5076 PSI	1.96"	750	3 or 4	9	1" F

- Sharp cutting edges and forward tearing jets tear through almost any clog
- Ports are hardened stainless steel insert type with precision port
- Works well for lines with roots
- Hardened stainless steel body

SEWER JETTING TURBO NOZZLE



Front



Rear

#200358681

ORDER #	PRESSURE	TEMP.	ORIFICE	FRONT JETS	REAR JETS	INLET	WEIGHT
200358651	5070 PSI	212° F	5.0	1	5	1/4" F	.61 lb
200358661	5070 PSI	212° F	6.0	1	6	1/4" F	.61 lb
200358681	5070 PSI	212° F	8.0	1	8	1/4" F	.61 lb

- Precision drilled rear drive jets
- All stainless steel construction
- Great nozzle for cutting, cleaning and removal



DUAL TURBO NOZZLE DRIVER

ORDER #	PRESSURE	O.D.	OUTLET	INLET
200049410	3625 PSI	3.46"	2 x 1/4" M	3/8" F



- Use with Suttner turbo nozzles
- Brass body with stainless steel male 1/4" connections
- Excellent choice for flushing silt and debris from sewer main lines



shown here with
turbo nozzles
(not included)

DUAL MEG NOZZLE DRIVER

ORDER #	PRESSURE	O.D.	OUTLET	INLET
010000399	6000 PSI	2.83"	2 x 1/4" FPT	1/2" F

- Use with (2) rear facing fan jet meg nozzles
- Brass body
- Great choice for flushing sewer mainlines



shown with here
Meg nozzles
(not included)

SINGLE TURBO NOZZLE DRIVER

ORDER #	PRESSURE	O.D.	OUTLET	INLET
200049400	5800 PSI	2.0625"	1/4" M	1/4" F

- Use with Suttner turbo nozzles
- Hardened stainless steel
- Fine choice for cutting and flushing roots



Shown here with
Turbo nozzle
(not included)

TURBO NOZZLE DRIVERS

ORDER #	PRESSURE	O.D.	NOZZLE SIZE	REAR JETS	INLET	RECOMMENDED TURBO NOZZLE
649081206065	5076 PSI	1.13"	065	6	1/4" F	ST-357 or ST-456
649081206080	5076 PSI	1.13"	080	4	1/4" F	ST-357 or ST-456
649081306065	5076 PSI	1.19"	065	6	3/8" F	ST-357 or ST-456
649081306080	5076 PSI	1.19"	080	4	3/8" F	ST-357 or ST-456
649081306090	5076 PSI	1.19"	090	6	3/8" F	ST-357 or ST-456
649081406010	5076 PSI	1.19"	100	6	3/8" F	ST-357 or ST-456
649081306120	5076 PSI	1.19"	120	6	3/8" F	ST-357 or ST-456
649082306480	6000 PSI	1.19"	480	6	3/8" F	ST-457
649082406065	7252 PSI	1.44"	065	6	1/2" F	ST-457 or ST-559
649082406100	7252 PSI	1.44"	100	6	1/2" F	ST-457 or ST-559
649082406115	6000 PSI	1.44"	115	6	1/2" F	ST-457
649082406120	7252 PSI	1.44"	120	6	1/2" F	ST-457 or ST-559
649082406150	7252 PSI	1.44"	150	6	1/2" F	ST-457 or ST-559
649082406170	6000 PSI	1.44"	170	6	1/2" F	ST-456 or ST-457
649082406180	6000 PSI	1.44"	180	4	1/2" F	ST-456 or ST-457
649082406200	6000 PSI	1.44"	200	6	1/2" F	ST-457
649082406250	6000 PSI	1.44"	250	6	1/2" F	ST-456 or ST-457
649082406300	6000 PSI	1.44"	300	6	1/2" F	ST-457



Inserts
included

1/4"



3/8" and 1/2"



Shown here
with turbo nozzle

- Stainless steel turbo nozzle driver
- Ideal for thrusting turbo nozzles into sewer lines for root cutting and forward sidewall blasting
- **Each part number includes the body and inserts, not the turbo nozzle**

***Disclaimer: Turbo Nozzle Drivers are NOT sold separately. Must use with Suttner turbo nozzle.**